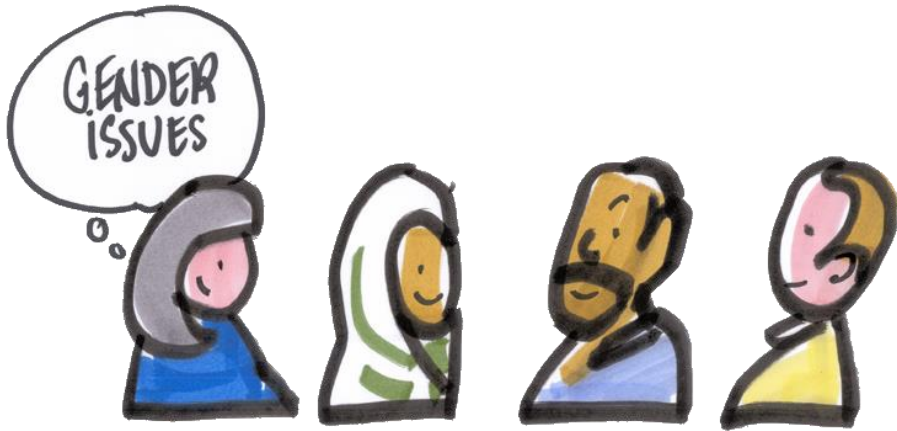




SESSION 6

Gender sensitive evaluations
Methods for complex
evaluations and Budget
Support evaluations



Gender responsive evaluations

Gender Responsive Evaluations

Provide info on how interventions are impacting on women/girls and men/boys and contributing to achievement of GEWE commitments. **Feeds into decision making**

Applicable to all types of EU interventions, not just gender-specific actions; gender- and power-neutrality does not exist: **actions impact women and men differently**, positively or negatively and their respective powers are key elements influencing this impact.

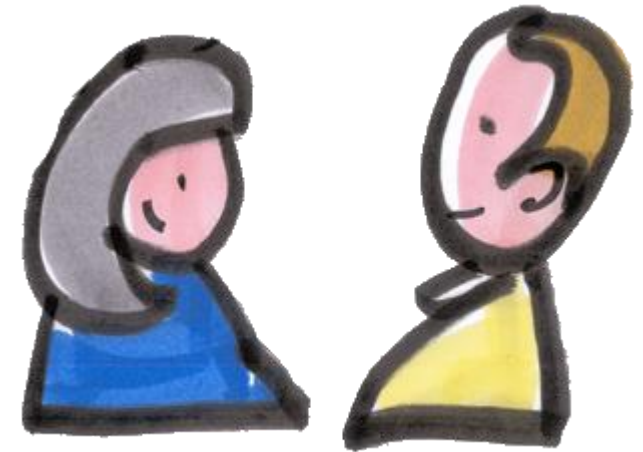
ALL evaluations should adopt a gender-equality and rights-sensitive approach; evaluators play key role in understanding and informing to what extent the interventions they evaluate contribute to the EU commitment on GEWE (and the RBA).



Gender Responsive Evaluation

A gender-responsive evaluation should comprise two elements:

1. an assessment of the contribution that an intervention has made to the ultimate goal of gender equality (GE) and
2. an assessment of the extent to which the intervention has pursued gender mainstreaming (GM) to ensure that women's and men's, and girls' and boys' concerns, experiences, practical needs and strategic interests are equally addressed.



Tools to support gender responsive evaluation

Addressing the evaluation criteria through a gender sensitive lens

Examples of EQs:

Effectiveness

- To what extent did the intervention address the causes of gender inequality and discrimination?
- To what extent has the intervention effectively contributed to the creation of favourable conditions for advancing gender equality?

Sustainability

- To what extent do the partners of the intervention own its results in the area of GM/GE and demonstrate commitment to their sustainability after the end of the intervention?



Check as well the evaluation matrix to see if the evaluation tools and sources - stakeholders are gender sensitive !



Complex Evaluations

Complex evaluations

All programmes above 5 million euros are to be evaluated

Big budgets often mean complex evaluations (several components, many contracts with many IPs etc.)

Complex methodological setting & careful management

(closer to strategic evaluation standards)



Among the complex evaluations: Budget Support Programmes.

EUD are directly managing more BS evaluations

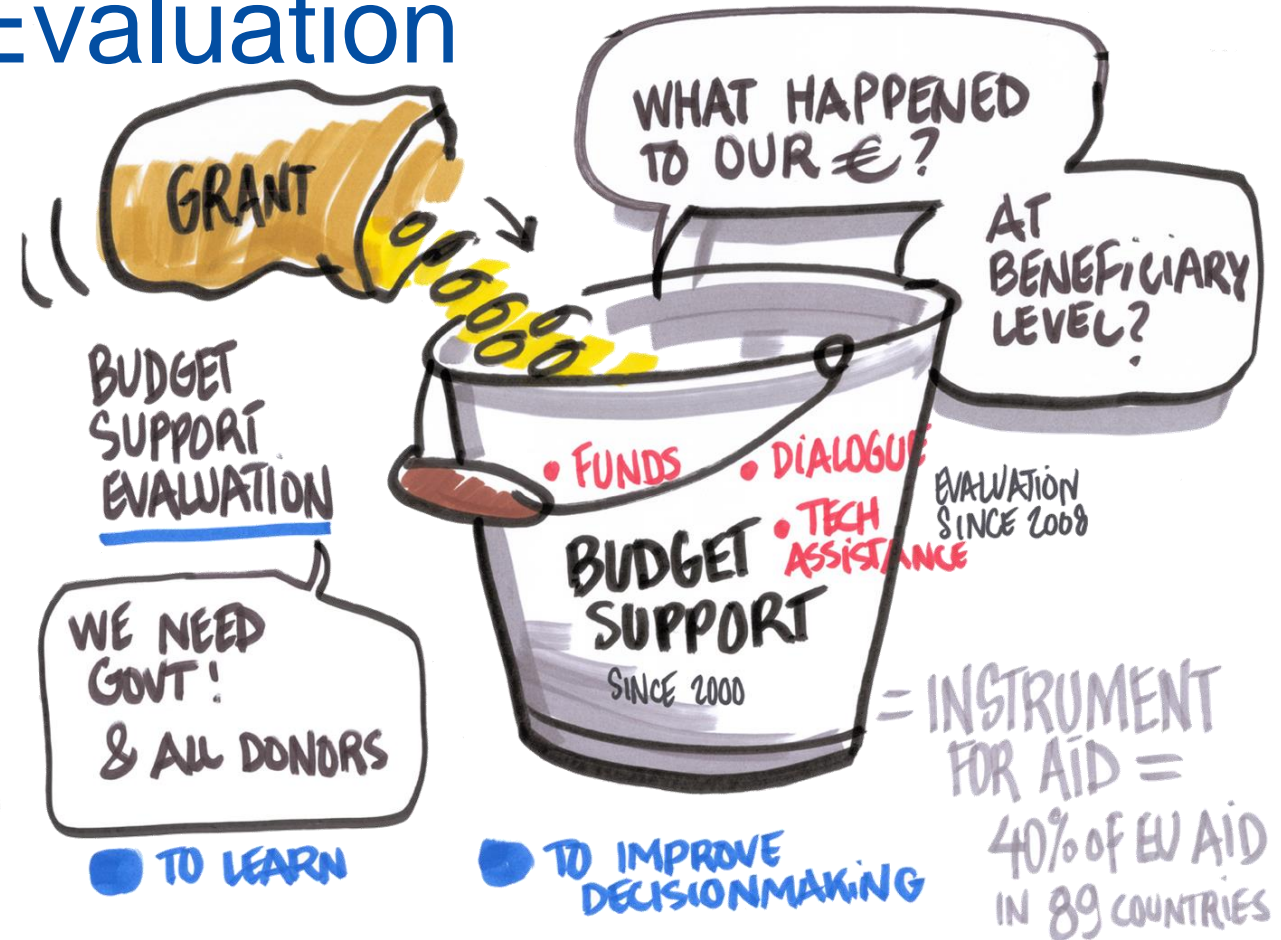
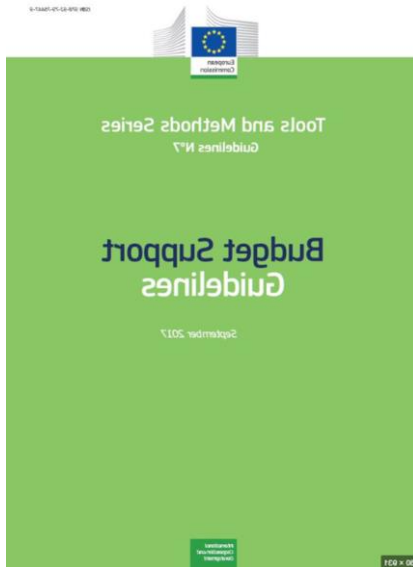
Specific evaluation methodology

(inspired by strategic BS evaluation methodology)



Budget Support Evaluation

1. BS Strategic Evaluations
2. BS Programme(s) Evaluations (new)



BS Programme(s) Evaluations - Why

- All programmes above €5 million have to be evaluated (Financial Regulation). EUDs to manage BSP evaluations.
- ROM not applied to Budget Support.

5 levels of Analysis

Level 1 Inputs

- I. Financial transfers
- II. Dialogue
- III. Capacity Development

Level 2 Direct Outputs

Direct effects:
opportunities/
aid framework

Level 3 Induced Outputs

Induced effects
on Government
policies & Service
delivery

Level 4 Outcomes

*Short / Medium
term
development
results*

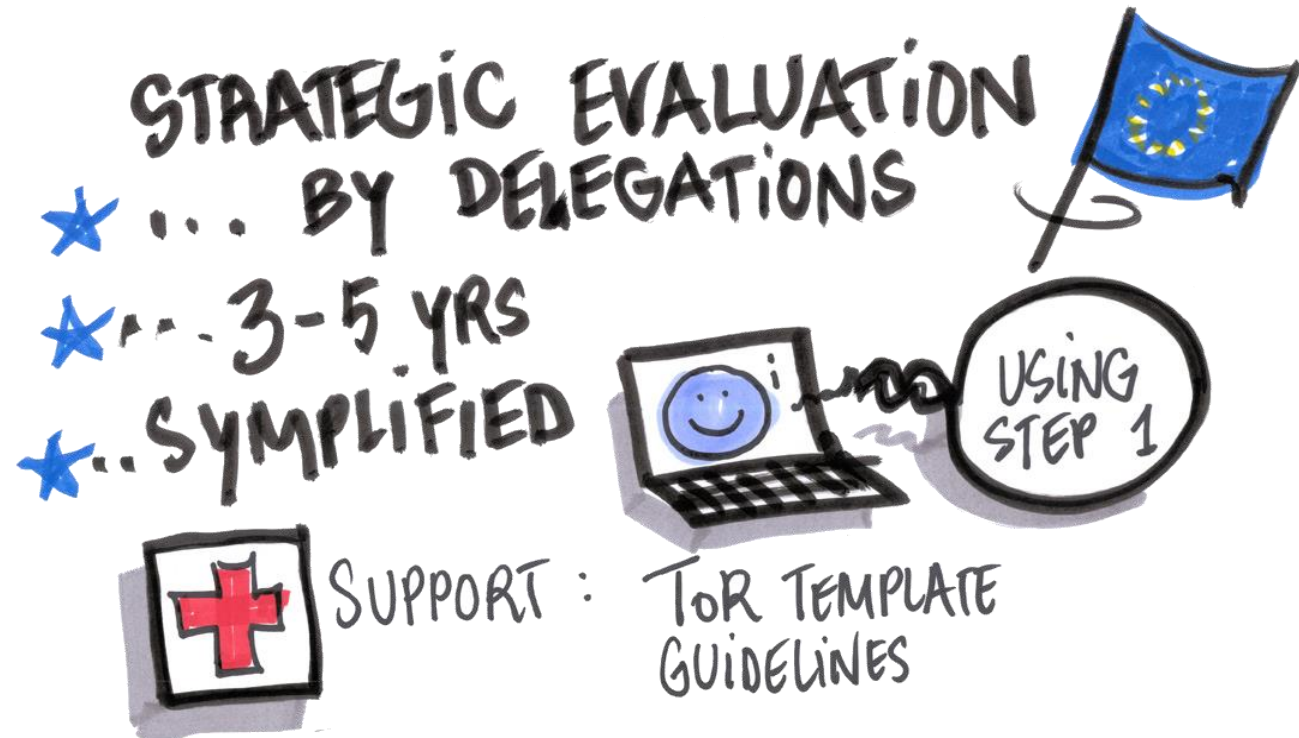
Level 5 Impact

*Longer term
development
results*

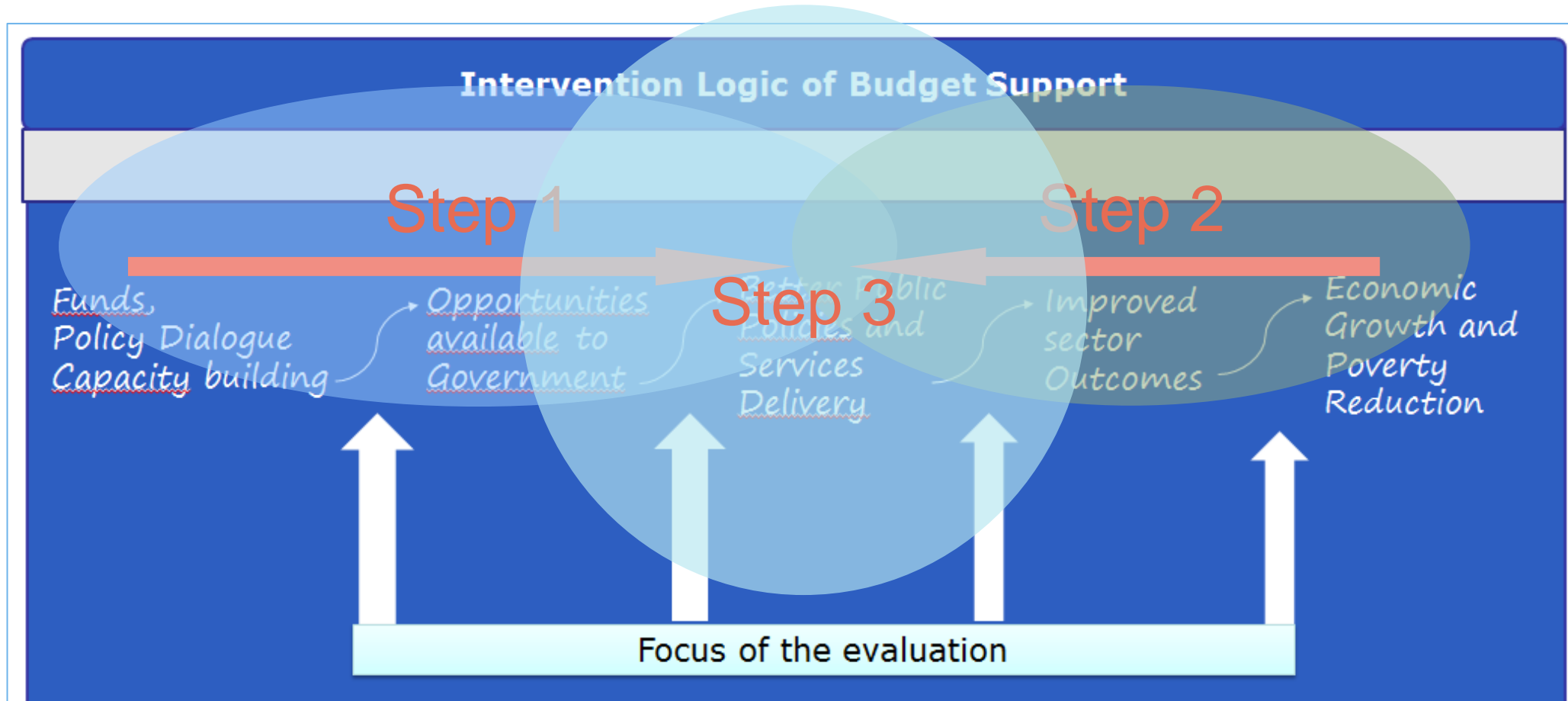
BS Strategic Evaluations

OECD/DAC methodological approach

- 5-level analysis, 3-Step approach
- Involve all Budget Support donors in the country (Joint) + Government
- Cover a long period of time (8-12 years)



BS Strategic Evaluations: 3-Step Approach





BUDGET SUPPORT

Trends and results 2021

(https://ec.europa.eu/international-partnerships/system/files/budget_support_-_trends_and_results_2021.pdf)

BS Programme(s) Evaluations - *How*

- ToR prepared by DG INTPA and DG NEAR – (in principle) only Step 1 and partially Step 2.
- Mid-term, Final or Ex-post evaluations. One BSP (usually sectoral) or a few co-existing.
- Support to EUD from ESS.
 - ✓ Good input for Strategic Evaluations.

Do you have to manage complex programme evaluations (BS or not)?

Don't copy-paste a neutral ToR template, but tailor them to the complexity of your programmes and needs!

ESS helpdesk is here to help:

- Up to 4 days support with your complex evaluations
- Additional ad hoc support to accompany you in the evaluation process (outlining the evaluation objectives & questions, drafting ToR, quality assuring the deliverables...)



Offline exercise

**Podcast listening - Explore
adaptive evaluation
approaches**

Exercise - Adaptive evaluation approaches

It's time to explore the famous ESS podcasts from the series EvalInCrisis!

Take a good cup of tea, put your headset on, and go take some fresh air while listening to a fascinating evaluation adaptation in time of crisis (and pandemic, of course!).

Ready? Go!

1. Follow this link to ESS webpage on Capacity4dev <https://europa.eu/capacity4dev/pafiriz/devco-ess/wiki/podcasts-evaluation-crisis>
2. Have a look at the podcast available and pick one (just 1 !) that is attracting to you
3. Listen attentively (about 15') to the podcast and note down the ideas that stroked you most during this podcast.
4. Go to <http://www.menti.com> type the code you received and share with us what was interesting



© European Union 2020

Unless otherwise noted the reuse of this presentation is authorised under the [CC BY 4.0](https://creativecommons.org/licenses/by/4.0/) license. For any use or reproduction of elements that are not owned by the EU, permission may need to be sought directly from the respective right holders.

